
Mitsubishi A/Q/FX Series Serial Master Driver

Information Sheet for Crimson v2.0

Compatible Devices

Mitsubishi PLC which uses A compatible 1C frames, ACPU common commands and control formats 1 or 4 (MELSEC).

Verified Device

- Mitsubishi A1S CPU via A1SJ71C24-R2 Module.
- Mitsubishi Q02H CPU via QJ71C24 Module.
- Mitsubishi FX2N via FX2N-485-BD.

Accessible Data

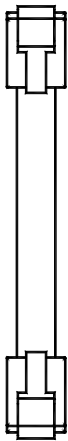
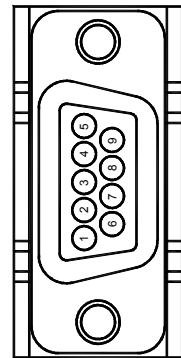
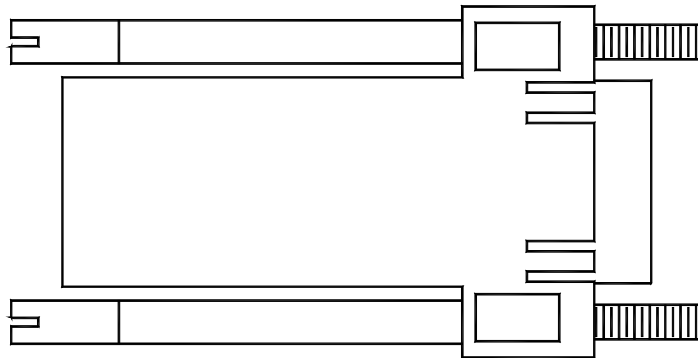
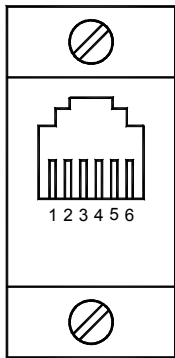
Prefix	Description	Element Size	Access
X	Input	Bit	Read / Write
Y	Output	Bit	Read / Write
M	Internal Relay	Bit	Read / Write
F	Annunciator	Bit	Read / Write
B	Link Relay	Bit	Read / Write
D	Data Register	Word	Read / Write
W	Link Register	Word	Read / Write
T	Timer Current Value	Word	Read / Write
C	Counter Current Value	Word	Read / Write

NOTE: All accessible data listed above may not be available for all Red Lion products. Please refer to the driver configuration specific to the applicable Red Lion product to determine data accessibility.

Communication Cable, G3 / Modular Controller / Data Station Plus to

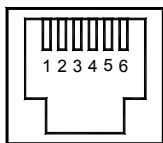
- Mitsubishi A Series via A1SJ71C24-R2 Module
- Mitsubishi Q Series via QJ71C24 Module

CBLMIT03 – 10' long



FROM RLC UNIT	Name	CONNECTER PINOUT	
		RJ12	DB9 MALE
1	CTS	1	-
2	Rx	2	3
3	COMM	3	5
4	COMM	4	-
5	Tx	5	2
6	RTS	6	1, 6, 8

The above table denotes the pin names of the RS232 port. When connecting, the pin name at the RS232 port is connected to the opposite of that pin name at the destination device.



RS232 PORT
(FROM RLC UNIT)

**Communication Cable, G3 / Modular Controller / Data Station Plus to
FX2N-485-BD**

RS485 Port	FX2N-485-BD
Pin 1 (TxB)	RDA
Pin 2 (TxA)	RDB
Pin 3 (RxA)	SDB
Pin 4 (RxB)	SDA
Pin 6 (Comm)	SG