

▶▶▶ Cellular Connectivity for ATM Terminals

Sixnet's ATM Cellular Routers™ use cellular technology to provide cost-effective, highly reliable connectivity for Automated Teller Machines (ATMs).

Financial processor approved and recommended, the “plug-and-play” ATM routers reduce complexity and streamline deployment. Complete with integrated routing, security and support for all ATM management programs, our easy-to-use routers provide a seamless connection to ATM switch applications. Sixnet ATM Cellular Routers are remotely manageable via SixView™ Manager, Sixnet's enterprise-class management software. SixView Manager offers user-friendly, web-based management and monitoring services. Additionally, SixView Manager enables users to remotely configure, update and distribute firmware to multiple routers, thereby saving time and money.



APPLICATIONS

- > ATMs
- > Kiosks
- > Mobile ATMs

PRODUCT HIGHLIGHTS

- > Financial processor approved
- > Plug-and-play installation
- > Support for ATM management programs
- > Built-in firewall and SSL
- > PCI compliant
- > Remote management via SixView Manager

FEATURES & BENEFITS

- > Cellular Advantages
 - Lowers installation and operational costs
 - Simplifies deployment and management of ATM networks
 - Plug-and-play installation
 - Eliminates dial-up phone lines
 - Cheaper and easier to deploy devices
 - Easier to repair cellular issues than to fix cable breaks
- > Remote Management & Monitoring
 - Speeds configuration and management
 - Simplifies problem determination
 - Remote administration and management of multiple routers from a single console
 - Reporting of key metrics
 - Remote configuration and updates
 - Integrated management capabilities
- > Reliable Operations
 - Minimizes downtime of business critical applications
 - Protects against unwanted intrusion
 - Advanced SSL and VPN features
 - High-speed cellular connectivity
 - Built-in security
- > Industry Standard Technology
 - Reduces complexity
 - Supports ATM diagnostic management program
 - Converts RJ11 dial tone to cellular
 - Financial processor approved and recommended
 - PCI compliant technology
 - ATM configuration services

▶▶▶ ATM Cellular Routers™ Specifications

CELLULAR RADIO OPTIONS:

- CDMA:
 2G 1xRTT
 3G EVDO Rev. A
 GSM:
 3G HSPA
 USB Aircard support available

IP

- IP transparency
 NAT/PAT

SECURITY

- IPSec/VPN
 SSL
 Stateful inspection firewall

INTERFACES

- 1x RJ45 10/100 Mbps autosensing
 1x RS232 Serial console port
 1x RJ11 dial tone (optional)

LED STATUS INDICATORS

- Power
 WAN
 Signal
 GPS
 RS232
 Ethernet link
 Ethernet activity

MANAGEMENT

- Remote unit monitoring
 Web-based management
 Sixnet or customer hosted

PHYSICAL

- 1x reset button
 1x ignition sense
 4x digital inputs
 3x digital outputs
 3x analog inputs

POWER

- 11V AC (US); 220V AC (International)

ENVIRONMENTAL

- Operating temp: -40°C to +60°C
 Humidity: 95% non-condensing

MECHANICAL

- Height: 7.75" (19.7cm)
 Width: 1.44" (3.7cm)
 Depth: 6.20" (15.7cm)

HARDWARE

- CPU: PowerPC RISC
 Ethernet: one (1) RJ45
 Console serial port: one (1) DB-9
 RJ11 dial tone (optional)
 Radio: Sierra 5727, 8790 or 8795 PCI express minicards
 Antenna: external, SMA connector

APPROVED PROCESSORS

- RBS WorldPay – Lynk
 Data Stream – ASAI
 Elan
 Columbus Data Systems
 Metavante

AVAILABLE CONFIGURATION SERVICES

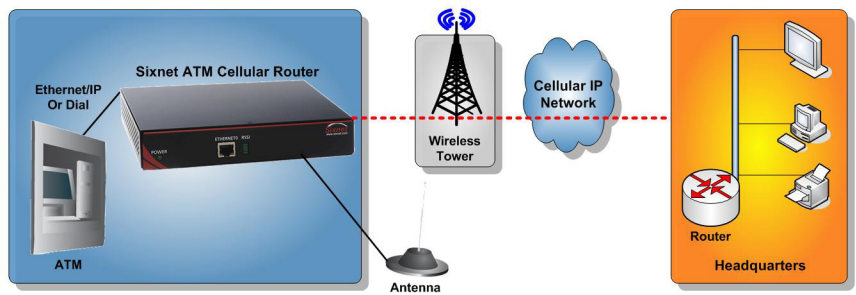
- Universal Money
 eFunds
 Cash Depot - Satellite Receivers
 Star Financial Bank
 Elan

ORDERING GUIDE

PART NUMBER	DESCRIPTION
A-2200	2G Ethernet/IP model
A-2201	2G dial port model
A-2300	3G Ethernet/IP model
A-2301	3G dial port model
A-1100	Aircard Ethernet/IP model
A-1101	Aircard dial port model

Note: Dial ATMs - 2G connectivity represents the best value

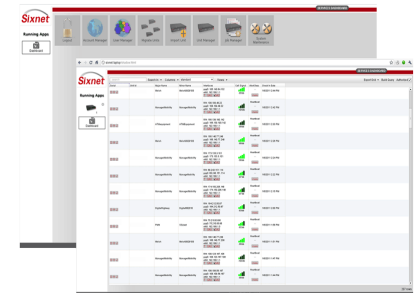
APPLICATION SCENARIO



SIXVIEW MANAGER - Powerful Remote Management and Monitoring Software

With SixView Manager's enterprise-class network management features, users have access to:

- > Remote Monitoring & Reporting of Key Metrics
 - Uptime
 - Utilization
 - Signal strength (RSSI)
 - Firmware version, ESN, MDN, IMEI
 - IP Address
- > Remote Administration
 - Mass configuration changes and updates
 - Remote executable (i.e., reboot)



www.redlion.net

Connect. Monitor. Control.

Americas
 sales@redlion.net

Asia-Pacific
 asia@redlion.net

Europe
Middle East
Africa
 europe@redlion.net

+1 (717) 767-6511

As the global experts in communication, monitoring and control for industrial automation and networking, Red Lion has been delivering innovative solutions for over forty years. Our award-winning technology enables companies worldwide to gain real-time data visibility that drives productivity. Product brands include Red Lion, N-Tron and Sixnet. With headquarters in York, Pennsylvania, the company has offices across the Americas, Asia-Pacific and Europe. For more information, please visit www.redlion.net. Red Lion is a Spectris company.