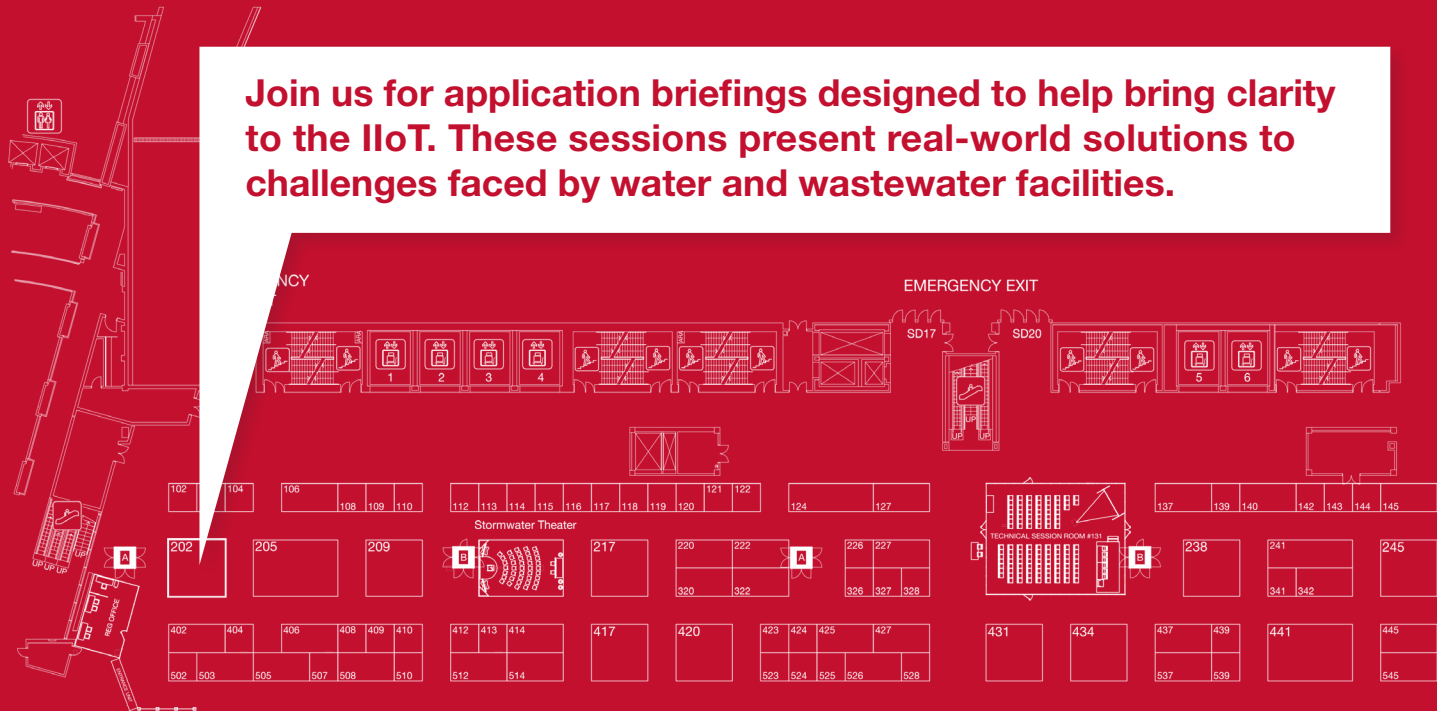


CLARITY FOR THE IIoT

Red Lion automation and networking products deliver results for industrial applications.

Connect. Monitor. Control.

Join us for application briefings designed to help bring clarity to the IIoT. These sessions present real-world solutions to challenges faced by water and wastewater facilities.



Red Lion Solutions for Water and Wastewater System Challenges

WEFTEC 2015 – Sept. 28-30, 2015

| | Monday Sept. 28 | Tuesday Sept. 29 | Wednesday Sept. 30 |
|--------------|---|---|---|
| 9:30 | Monitor Water Distribution System Pressure | Implement & Modernize Monitoring & Control Systems for Water Applications | Manage Peak Flow at Wastewater Plants |
| 10:30 | Implement & Modernize Monitoring & Control Systems for Water Applications | Improve Storm Water Management with Cellular Technology | Monitor Water Distribution System Pressure |
| 11:30 | Manage Peak Flow at Wastewater Plants | Monitor Water Distribution System Pressure | Improve Storm Water Management with Cellular Technology |
| 1:30 | Monitor Wastewater Treatment Plant Effluent Quality | Monitor Wastewater Treatment Plant Effluent Quality | Manage Peak Flow at Wastewater Plants |
| 2:30 | Improve Storm Water Management with Cellular Technology | Improve Storm Water Management with Cellular Technology | Monitor Wastewater Treatment Plant Effluent Quality |
| 3:30 | Monitor Water Distribution System Pressure | Manage Peak Flow at Wastewater Plants | Implement & Modernize Monitoring & Control Systems for Water Applications |

Session Abstracts

These 15-minute educational sessions are offered hourly and focus on ways to help you extend equipment lifespan, improve process visibility and push control to the edge.

Implement & Modernize Monitoring & Control Systems for Water Applications

Whether facing isolated, non-networked pump stations or transitioning to more advanced systems, all municipalities and water treatment districts can benefit from upgrading water management systems to capitalize on advances in automation and control capabilities. Learn how protocol conversion and cellular technology working in combination can enable local control for remote assets.

Monitor Wastewater Treatment Plant Effluent Quality

As regulations evolve and requirements become more stringent, the importance of continually monitoring effluent quality parameters increases. Learn about simple cost-effective options to automate data collection, data logging and communications to ensure compliance and increase efficiency.

Monitor Water Distribution System Pressure

Historically, monitoring the pressure of water distribution systems presented a costly and difficult challenge to water providers. Learn how technology advances enable cost-effective options by using cellular automation to provide ongoing monitoring of remote assets. This enable organizations to achieve greater pressure compliance and more accurate modeling for future system expansions.

Improve Storm Water Management with Cellular Technology

Weather-related shortcomings of legacy communications networks have often left water management authorities with limited visibility at those times when information is at its most important. Learn how some municipalities are overcoming these limitations by employing cellular automation products.

Manage Peak Flow at Wastewater Plants

Efficiently managing wastewater treatment often requires establishing and managing an overflow tank system to proactively address times when usage scales beyond available processing capacities. Often, this monitoring and control capability must be integrated into an already established system. Learn how one water plant seamlessly integrated its temporary bypass system into the existing SCADA system without the use of a traditional PLC.

Remote Assets. Local Control.

Simpler, smarter control from RAM® cellular RTUs

Managing remote assets and ensuring smooth operations when you are at a distance has never been easier. Red Lion's Sixnet® series RAM® industrial cellular RTUs provide users an intuitive, web-based interface to easily configure event parameters and define alarm states that trigger I/O or send SMS text messages based on real-time operational data.

With connectivity options such as I/O, serial, Ethernet and optional Wi-Fi, our rugged RAM RTUs provide a secure all-in-one platform that seamlessly integrates with existing equipment to enable data visibility, control and real-time notifications for field-deployed assets.



RAM 9000 Cellular RTU

High-Density I/O RTUs with GPS and Event Engine

RAM 9000 high-density I/O cellular RTUs with multi-carrier 4G LTE support provide advanced control and communication for monitoring and controlling remote assets and processes in extreme conditions.

Product Highlights

- High-performance multi-carrier 4G LTE connectivity
- Built-in I/O lowers total system cost
- Multiple communication ports
- Active GPS receiver automatically tracks device location
- Routing capabilities provide secure, reliable communication
- Event Engine that can send SMS messages or control I/O based on operational data



Support 300+ Protocols

Combine Red Lion's Data Station Plus (DSP) with RAM Cellular RTUs to connect, monitor and control virtually any device, regardless of location. The DSP acts as a nexus for data collection and management, with protocol conversion, data logging and remote machine access.

Graphite® HMIs

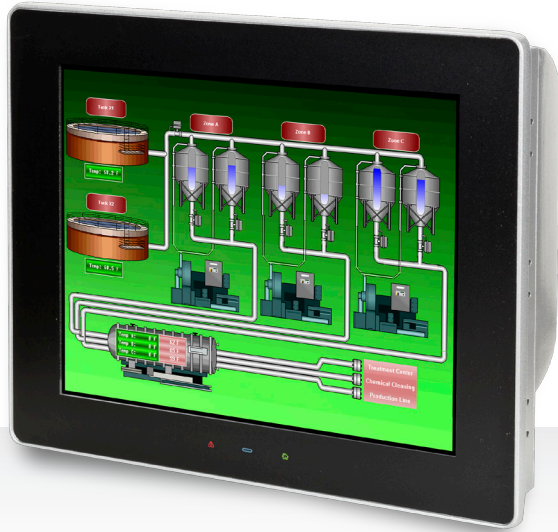
Rugged HMIs for Every Application & Environment

Red Lion's Graphite® advanced operator panels are the industry's first HMI touchscreens to combine a rugged yet aesthetically-pleasing all-aluminum construction with a modular I/O architecture. All of the Graphite models offer drag-and-drop protocol conversion, data logging and web-based monitoring and control. With UL Class I, Division 2 listing, ABS and ATEX/IECEX approvals, Graphite HMIs enable customers to connect, monitor and control processes in harsh environments.

Graphite HMIs feature reliable, resistive analog touchscreens and a rugged aluminum housing that enable operation in high shock, vibration and temperature applications. Standard and widescreen models are available in sizes ranging from 7 inch to 15 inch. Both the 7 inch and 10 inch models are available with UV-resistant, sunlight-visible displays for outdoor use.

Product Highlights

- Convert up to 20 protocols simultaneously from over 300 supported drivers
- Offer unparalleled expansion capabilities via plug-in modules
- Feature wide -20° to 60°C operating temperature range
- Include sunlight readable outdoor rated models
- Provide built-in data logging (SD card), web server and FTP for remote access
- Send email and/or SMS notifications on alarm conditions
- UL Class 1, Division 2 Listed for hazardous locations, ABS and ATEX/IECEX zone 2/22 approved



Need more I/O?

Easily expand Graphite HMI I/O capabilities with Red Lion's rugged **E3 I/O™** modules. Featuring mixed I/O configurations—including, discrete, analog and temperature—E3 I/O modules add powerful monitoring to any industrial application.



NT24k™ Managed Ethernet Switches

Over 100 configurations provide full range of connectivity

Red Lion's N-Tron® series NT24k™ all-Gigabit managed industrial switches provide the gold standard for industrial networking. Developed from the ground up to maximize media options, network speed and switch management, our rugged NT24k platform exceeds industrial networking requirements.

Designed with industrial environments in mind, these switches feature -40° to 85°C operating temperatures, ABS, UL Class I, Division 2 (Group A, B, C and D) listings and high tolerance to shock and vibration. Providing >1 million hour MTBF ratings, NT24k switches will perform reliably in any industrial environment.

The NT24k platform helps address uptime needs with N-Ring™ technology that boasts 30ms recovery time for rings containing up to 250 switches. Pair ultra-fast healing time with fully managed Layer 2 functionality and you have a robust solution for all of your industrial networking needs.

Product Highlights

- All-Gigabit design supports plug-in modules or fixed port configurations
- IEEE 802.3af/at PoE+ support on all copper ports
- Smart plug-and-play operation
- N-Ring and N-Link™ network ring technology
- Robust remote monitoring
- Redundant 10-49 VDC power inputs
- Wide -40° to 85°C operating temperature range
- UL Class 1, Division 2 Listed for hazardous locations, EN50155, EN50121, EN61373 and ABS approved
- Designed to comply with IEEE 1613

Hot-Swappable Modules

Networks are as dynamic as the applications where they are deployed. Today's network infrastructures require hardware to grow and adapt as needs change. With over 100 configuration options, the all-Gigabit modular NT24k switches offer the industry's highest level of flexibility with hot-swappable, auto-detecting modules. Ethernet, fiber and SFP options are available with Fast Ethernet or Gigabit Ethernet connectivity to meet your needs today and tomorrow.





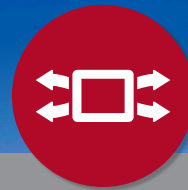
Extend Equipment Lifespan

Increase the value of legacy equipment with powerful protocol conversion.



Improve Process Visibility

Gain insight and drive productivity with data logging and communication capabilities.



Push Control to the Edge

Scale systems management with control capabilities at the device instead of the central office.