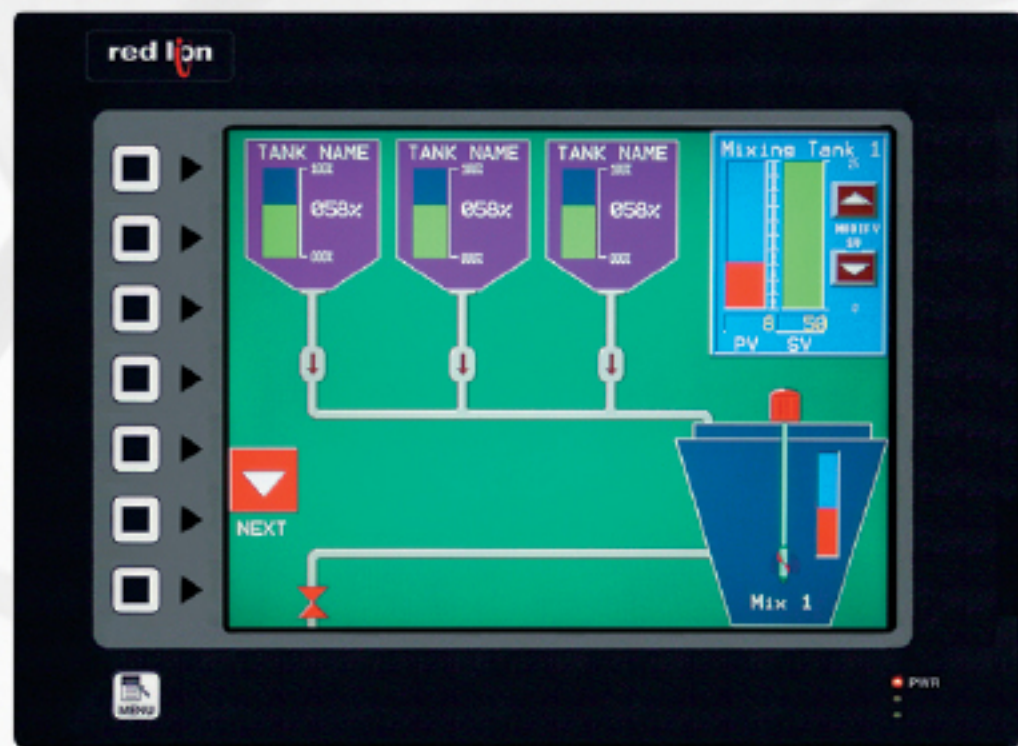


### G310 HMI

10" Operator Interface Touchscreen



RS485



**Emerson**  
ROC 800

**SLX-5MS**  
Sixnet Ethernet  
Switch



**702-W**  
N-Tron Wi-Fi Radio



Ethernet

Ethernet

Ethernet

# Gas Distribution

- > Sunlight visible, UV hardened HMI supports 250+ protocols
- > Native ROC protocol support
- > Supports custom TLPs
- > Data logging for process analysis
- > Built-in web server for remote control