







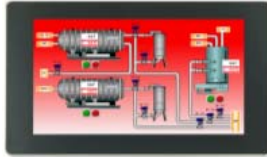


7" Comparison

	Graphite	Beijer	Allen Bradley	Siemens	Proface	Automation Direct	Maple	G3 Series
								
Model	G07	T7B	PanelView Plus 6 600	TP700	GP - 4401WW	EA7-T8C	HM15070P	G306
Display	7" TFT	7 " TFT	6" TFT	7" TFT	7" TFT	8" TFT	7" TFT	TFT
Display Resolution	800 x 480	800 x 480	640 x 480	800 x 480	800 x 480	640 x 480	800 x 480	320 x 240
Color Support	16 M	262K	18 Bit	16 M	65K	64K	16 M	256
Power Supply	19.2 to 28.8 VDC	18 to 32 VDC	19.2 to 28.8 VDC or 100 to 240 AC	19.2 to 28.8 VDC	19.2 to 28.8 VDC	20.1 to 28.8 VDC	24 VDC	19.2 to 28.8 VDC
Serial Port	2	2	2 (second optional)	3	2	1	2	2
Ethernet Ports	2 (2nd Optional)	2	1	2 (ProfiNet)	1	1	1	1
USB Host	2	3	2	2	1	1	1	0
Memory Card	SD Card	SD Card (Optional)	SD card	2 SD Cards	SD Card	CF Card	SD Card	Compact Flash Card
I/O Capability	Yes	Fieldbus Module	No	No	No	No	No	No
Operating Temperature	-20 to 60° C	-10 to 50° C	0 to 55° C	0 to 40° C	0 to 55° C	0 to 50° C	-20 to 50° C	0 to 50° C
Operating Shock	40 G	Not listed	15 G	25 G	15 G	15 G	Not listed	40 G
Vibration	5 to 300 Hz, 3 G	Not listed	10 to 57 Hz, 2 G	5 to 8.4 Hz, .5 G	5 to 9 Hz, .5 G	57–150 Hz, 1 G	10 to 25 Hz, 2 G	8 to 500 Hz, 3 G
Software	Included	Charge	Charge	Charge	Charge	Charge	Charge	Included
Panel Space Required	196 x 140 mm	204 x 143 mm	220 x 154 mm	214 x 158 mm	205 x 160 mm	276 x 222 mm	192 x 138 mm	225 x 180 mm

HMI 9" Comparison

Graphite











Siemens



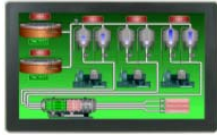
Model	G09	TP900
Display	TFT	TFT
Display Resolution	800 x 480	800 x 480
Color Support	16 M	16 M
Power Supply	19.2 to 28.8 VDC	19.2 to 28.8 VDC
Serial Port	2	2
Ethernet Ports	2 (2nd Optional)	2 (ProfiNet)
USB Host	2	2
Memory Card	SD Card	2 SD Cards
I/O Capability	Yes	No
Operating Temperature	-10 to 60° C	-20 to 60° C
Operating Shock	40 G	25 G
Vibration	5 to 500 Hz, 4G	8.4 to 500 Hz, 1 G
Software	Included	Charge
Panel Space Required	255 x 165 mm	274 x 190 mm

HMI 10" Comparison

	Graphite	Beijer	Allen Bradley	Idec	Proface	Maple	Automation Direct	G3 Series
								
Model	G10	T10A	Panel View Plus 6 1000	HG3G-AJT22MF-B	GP - 4501TAD	HMIS100T	EA7-T10C	G310
Display	TFT Widescreen	TFT Screen	TFT	TFT	TFT	TFT	TFT	TFT
Display Resolution	800 x 480	640 x 480	640 x 480	800 x 600	640 x 480	800 x 480	640 x 480	640 x 480
Color Support	16 M	16 M	18 Bit	65K	65K	65K	64K	32K
Power Supply	19.2 to 28.8 VDC	18 to 32 VDC	19.2 to 28.8 VDC or 85 to 264 AC	20.4 to 28.8 VDC	19.2 to 28.8 VDC or 85 to 264 VAC	24 VDC	20.4 to 28.8	19.2 to 28.8 VDC
Serial Port	2	2	1 - RS232, additional requires module	2	2	3	1	2
Ethernet Ports	2 (2nd Optional)	1	1, additional requires module	1	1	1	1	1 (2nd Optional)
USB Host	2	1	2	2	1	1	1	1
Memory Card	SD Card	SD Card (Optional)	SD card	SD Card	SD Card	SD Card	Compact Flash Card	Compact Flash Card
Module Capability	Yes	Fieldbus Module	Yes	Yes	No	No	No	No
Operating Temperature	-10 to 60° C	-10 to 60° C	0 to 55° C	0 to 50° C	0 to 55° C	0 to 50° C	0 to 50° C	0 to 50° C
Operating Shock	40 G	Not listed	15 G	15 G	15 G	Not listed	15 G	35 G
Vibration	5 to 500 Hz, 4 G	Not listed	57 to 500 Hz, 2 G	5 to 8.4Hz, 1 G	9 to 150 Hz, 1 G	10 to 25 Hz, 2 G	57 to 150 Hz 1 G	5 to 150 Hz, 2 G
Software	Included	Charge	Charge	Charge	Charge	Charge	Charge	Included
Panel Space Required	275 x 218 mm	280 x 228 mm	363 x 282 mm	270 x 212 mm	272 x 214 mm	259 x 201 mm	347 x 271 mm	325 x 241 mm

HMI 12" Comparison

Graphite



Beijer



Allen Bradley



Siemens



Proface



Automation Direct



Model	G12	T12B	PanelView Plus 6 1250	TP1200	GP-4601T	EA7-T12C
Display	TFT	TFT	TFT	TFT Widescreen	TFT	TFT
Display Resolution	1280 x 800	1280 x 800	640 x 480	1280 x 800	800 x 600	800 x 600
Color Support	16 M	262K	18 Bit	16 M	65K	65K
Power Supply	19.2 to 28.8 VDC	18 to 32 VDC	19.2 to 28.8 VDC or 85 to 264 AC	19.2 to 28.8 VDC	19.2 to 28.8 VDC or 85 to 264 VAC	20.4 to 28.8 VDC
Serial Port	2	2	1 - RS232, additional requires module	2	2	1
Ethernet Ports	2 (2nd Optional)	2	1, additional requires module	2 (ProfiNet)	1	1
USB Host	2	3	2	2	1	1
Memory Card	SD Card	SD Card (Optional)	SD card	2 SD Cards	SD Card	Compact Flash Card
I/O Capability	Yes	Fieldbus Module	Yes	No	No	No
Operating Temperature	-10 to 60° C	-10 to 50° C	0 to 55° C	-20 to 60° C	0 to 55° C	0 to 50° C
Operating Shock	40 G	Not listed	15 G	25 G	15 G	15 G
Vibration	5 to 500 Hz, 4 G	Not listed	57 to 500 Hz, 2 G	8.4 to 500 Hz, 1 G	9 to 150 Hz, 1 G	57 to 150 Hz 1 G
Software	Included	Charge	Charge	Charge	Charge	Charge
Panel Space Required	307 x 208 mm	340 x 242 mm	257 x 338 mm	330 x 241 mm	315 x 241 mm	339 x 280

HMI 15" Comparison

Graphite



Beijer



Allen Bradley



Siemens



Automation Direct



G3 Series



Model	G15	T15B	PanelView Plus 6 1500	TP1500	EA7-T15C	G315
Display	TFT	TFT	TFT	TFT	TFT	TFT
Display Resolution	1024 x 768	1280 x 800	1024 x 768	1280 x 800	1024 x 768	1024 x 768
Power Supply	19.2 to 28.8 VDC	18 to 32 VDC	19.2 to 28.8 VDC or 85 to 264 AC	19.2 to 28.8 VDC	20.4 to 28.8 VDC	19.2 to 28.8 VDC
Color Support	16 M	262K	18 Bit	16 M	65K	32K
Serial Port	2	2	1 - RS232, additional port(s) requires module	1	1	2
Ethernet Ports	2 (2nd Optional)	2	1, additional port(s) requires module	3 (ProfiNet)	1	2 (2nd Optional)
USB Host	2	3	2	2	1	0
Memory Card	SD Card	SD Card (optional)	SD card	2 SD Cards	Compact Flash Card	Compact Flash Card
I/O Capability	Yes	Fieldbus Module	Yes	No	No	No
Operating Temperature	-10 to 60° C	-10 to 50° C	0 to 55° C	-20 to 60° C	0 to 50° C	0 to 50° C
Operating Shock	40 G	Not listed	15 G, 11 ms	250 m/s ² , 6 ms	15 G, 11 ms	40 g, 9 msec
Vibration	5 to 500 Hz, 4 G	Not listed	57 to 500 Hz, 2 G	8.4 to 500 Hz, 1 G	57–150 Hz, 1 G	5 to 150 Hz, 2 G
Software	Included	Charge	Charge	Charge	Charge	Included
Panel Space Required	356 x 282 mm	410 x 286 mm	305 x 391 mm	415 x 310 mm	425 x 330 mm	406 x 330 mm